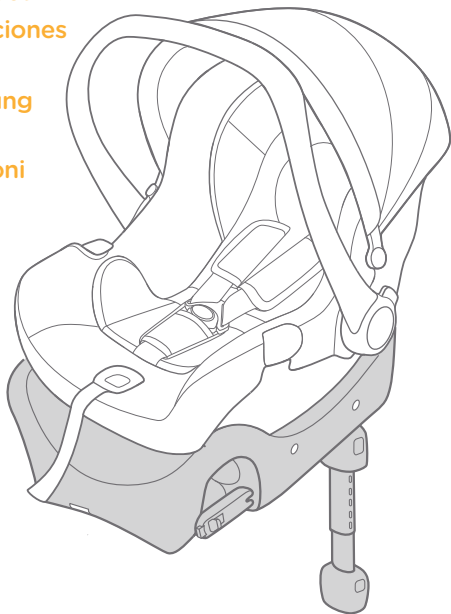




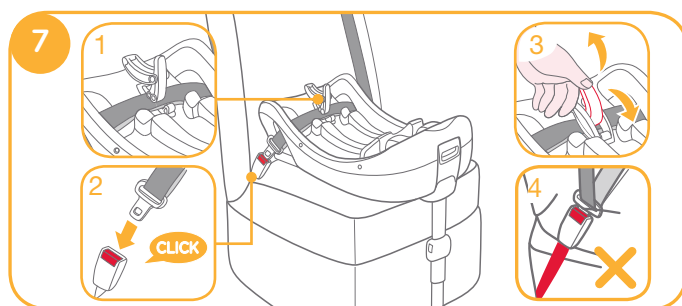
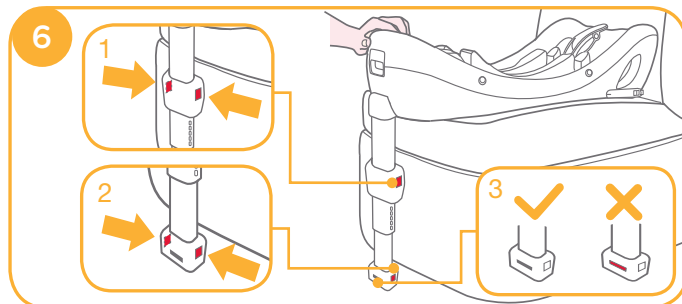
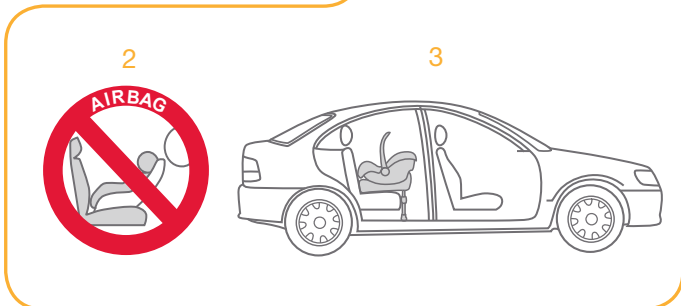
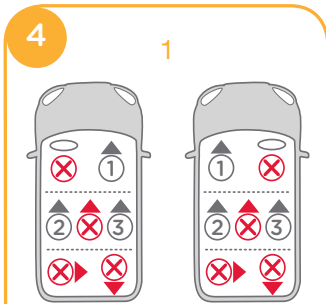
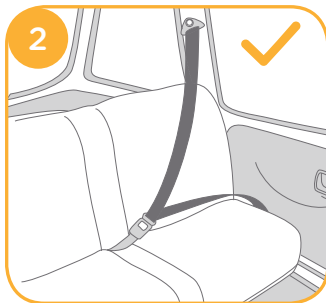
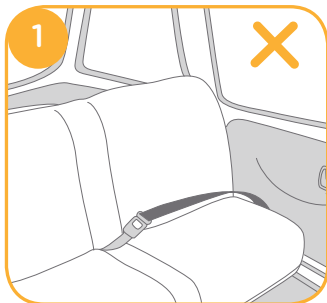
0+ (0-13kg)

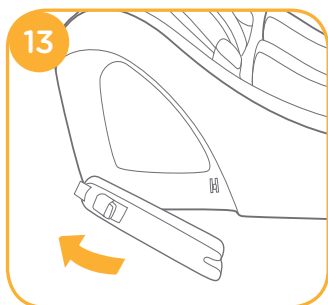
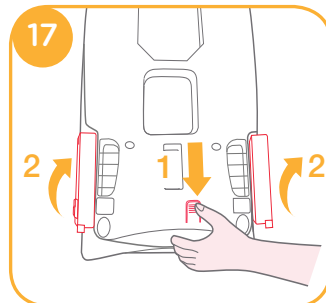
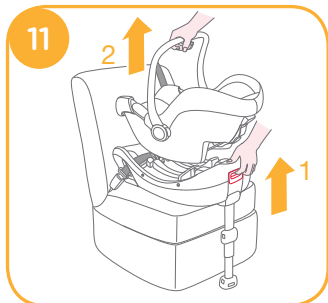
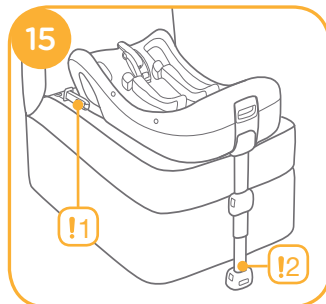
gemm™ and juva™ child restraint attachment to i-Base™

- GB Instruction Manual
- PT Manual de instruções
- ES Manual de instrucciones
- FR Mode d'emploi
- DE Bedienungsanleitung
- NL Handleiding
- IT Manuale di istruzioni
- TR Kullanma kılavuzu
- SE Bruksanvisning
- AR دليل التعليمات



Any questions for using gemm or juva, please refer to each manual.







Welcome to Joie™

Congratulations on becoming part of the Joie family! We are so excited to be part of your journey with your little one. While traveling with the Joie Gemm™ & Juva infant child restraint you are using a high quality, fully certified safety Group 0+ infant child restraint. This product is suitable for use with children weighing under 13kg (approximately 1.5 years old or under). Please carefully read this manual and follow each step to ensure a comfortable ride and best protection for your child.

This infant child restraint is approved to European Regulation No. 44, 04 series of amendments. Please read all the instructions in this manual before installing and using the product.

Please Confirm

This infant child restraint can be installed using a 3 point retractable adult seat belt approved to ECE R16 or similar standard OR In vehicles with ISOFIX anchorage systems provided.

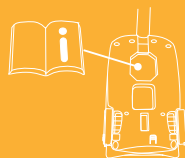
Base

These instructions show the use of the infant carrier module and the base. Please note the base may be sold separately.

! IMPORTANT: KEEP FOR FUTURE REFERENCE. PLEASE READ CAREFULLY.

Keep this Instruction Manual always with the child restraint. If you own a base, please keep the instruction manual in the storage compartment at the bottom of the base.

Visit us at joiebaby.com to download manuals, see more exciting Joie products and register your child restraint.



Contents

Reference Figures	1 - 4
WARNING	7 - 9
Emergency 1	9
Product Information	9
i. for Seat with Base	9
Concerns on Installation	11
Installing with Base	11
a. Installation with 3-point-belt	11
b. Installation with ISOFIX System	13
Vehicle Fitting Information	14

WARNING

- ! Please check before you purchase this infant child restraint if it can be installed properly in your vehicle.
- ! NO infant child restraint can guarantee full protection from injury in an accident. However, proper use of this infant child restraint will reduce the risk of serious injury or death to your child.
- ! This infant child restraint is designed ONLY for a child weighing under 13kg.
- ! Any straps of infant child restraint and vehicle seat should be tightened and not twisted.
- ! DO NOT install this infant child restraint without following the instructions in this manual or you may put your child at serious risk of injury or death.
- ! NEVER leave your child unattended when in the child restraint.
- ! DO NOT make any modification to this infant child restraint or use it along with component parts from other manufacturers.
- ! DO NOT use this infant child restraint if it has been damaged or has missing parts.
- ! DO NOT have your child in large/oversized clothes because this may prevent your child from being properly and securely fastened by the shoulder harness straps and the crotch strap between the legs.
- ! DO NOT leave this infant child restraint or other items unbelted or unsecured in your vehicle because unsecured infant child restraint can be thrown around and may injure occupants in a sharp turn, sudden stop, or collision.
- ! Do not place this infant child restraint in seating positions where an active frontal airbag is installed. Death or serious injury may occur. Please reference vehicle owner's manual for more information.
- ! NEVER use a second-hand infant child restraint or an infant child restraint whose history you do not know because they may have structural damage that endangers your child's safety.
- ! NEVER use ropes or any other substitutes to secure infant child restraint in vehicle or to secure child into child restraint. Only use vehicle belt or the ISOFIX system to secure infant child restraint in vehicle.
- ! DO NOT use this infant child restraint without the soft goods.
- ! DO NOT put anything other than the recommended inner cushions in this Infant child restraint.
- ! The soft goods should not be replaced with any besides the ones recommended by the manufacturer. The soft goods constitute an integral part of the infant child restraint performance.
- ! Be sure that the infant child restraint is installed in such a way that no part of it interferes with movable seats or in the operation of vehicle doors.
- ! DO NOT continue to use this infant child restraint after it has suffered any type of crash, even a minor one. Replace immediately as there may be invisible, structural damage from the crash.
- ! Remove this infant child restraint from the vehicle seat when it is not in regular use.
- ! Consult the retailer for issues concerning maintenance, repair and part replacement.
- ! To avoid the risk of falling out, always secure the child using the safety harness when the child is placed in child restraint, even when the infant child restraint is not in the vehicle.
- ! Before carrying the infant child restraint by hand, ensure that the child is fastened with the safety harness, and that the handle is correctly locked in a vertical position.
- ! To avoid serious injury or death, NEVER place infant car on elevated surface seat with child in it.
- ! The parts of this infant child restraint should not be lubricated in any way.
- ! Always secure child in child restraint, even on short trips, as this is when most accidents occur.
- ! DO NOT use this infant child restraint for more than 5 years after the purchase date as parts may degrade over time, or from exposure to sunlight, and may not perform adequately in a crash.
- ! Please keep this infant child restraint away from sunlight, otherwise it may be too hot for child's skin. Always touch test seat before placing child in it.
- ! Frequently check the ISOFIX guides for dirt and clean them if necessary. Reliability can be effected by ingress of dirt, dust, food particles etc.

- ! After your child is placed in this infant child restraint, the safety belt must be used correctly, and ensure that any lap strap is worn low down, so that the pelvis is firmly engaged.
- ! DO NOT place any objects in the load leg area in front of your base.
- ! DO NOT use any load bearing contact points other than those described in the instructions and marked on the child restraint.

Emergency

In case of emergency or accidents, it is most important to have your child taken care of with first aid and medical treatment immediately.

Product Information

i. for Seat with Base

1. The Joie Infant Carrier Module with Base is a "Semi Universal ISOFIX Class C and D Child Restraint" and should be fitted using at 3 point adult seat belt approved to ECE R16 or the ISOFIX connections. Please refer to the Vehicle Fitting Information at the back of this manual.
2. If in doubt, consult either the infant child restraint manufacturer or the retailer.

For Installation with 3-point-belt

It will fit vehicles fitted with 3-point retractor safety-belts. Seat positions in other cars may also be suitable to accept this infant child restraint. If in doubt, consult either the infant child restraint manufacturer or the retailer.

For Installation with ISOFIX System

This is an ISOFIX INFANT CHILD RESTRAINT SYSTEM. It is approved to Regulation No. 44, 04 series of amendments for general use in vehicles fitted with ISOFIX anchorages systems.

It will fit vehicles with positions approved as ISOFIX positions (as detailed in the vehicle handbook), depending on the category of the child seat and of the fixture. If in doubt, consult either the infant child restraint manufacturer or vehicle manufacturer.

The ISOFIX size class for which this device is intended is C and D.

Product	Infant Child Restraint
Suitable for	Child weighing under 13kg
Mass Group	Group 0+
Materials	Plastics, metal
Patent No.	Patents pending

Concerns on Installation

- ! DO NOT install this infant child restraint on vehicle seats with Lap Belts.(Fig. 1)
- ! This infant child restraint is suitable for vehicle seats with a 3-point Retractor Safety Belt (with or without base) ONLY (Fig. 2), and ISOFIX anchor points WITH the Base. (Fig. 3)
- ! DO NOT install this infant child restraint on vehicle seats that face sideways or rearward with respect to the moving direction of the vehicle. (Fig. 4.1)
- ! DO NOT place rear-facing infant child restraint on frontal seat with air bag (Fig. 4.2), death or serious injury may occur. Please reference vehicle owner's manual for more information.
- ! It is recommended to install this infant child restraint on the rear vehicle seat. (Fig. 4.3)
- ! DO NOT install this infant child restraint on vehicle seats movable during installation.
- ! To know more detailed installation information for seat with base, please refer to the section 'Vehicle Fitting Information'.

Installing with Base

a. Installation with 3-point-belt

1. Unfold the load leg from storage compartment. (Fig. 5)
2. After placing the base on the vehicle seat, extend the load leg to floor (Fig. 6), the load leg indicator shows green means it is installed correctly, red means it is installed incorrectly. (Fig. 6.3)
 - ! The load leg has 24 positions. When the load leg indicator shows red this means the load leg is in the wrong position.

- ! Make sure the load leg is secure by pressing down on the front of the base.
- ! Squeeze the load leg releasing button, then shorten the load leg upwards.

3. Open the lock-off and route the vehicle safety belt through the belt path (Fig. 7.1), and lock it into the buckle. (Fig. 7.2)
4. Tighten the vehicle safety belt as much as possible while pushing down on the base, and check it is not loose or twisted, then close the lock-off. (Fig. 7.3)
 - ! The infant child restraint can not be used if the vehicle safety belt with female buckle is too long to tie the base. (Fig. 7.4)
 - ! Check that the safety belt does not move by pulling and pushing hard on base. If belt loosens or lengthens, repeat procedure.

The installed base is shown as Fig. 8

- ! Please ensure that there is no gap between the vehicle seat and the bottom of the base.
 - ! The safety belt must go under the lock-off, not over the lock-off. (Fig. 8.1)
 - ! The safety belt must be locked into the buckle. (Fig. 8.2)
 - ! The load leg must be installed correctly with green indicator. (Fig. 8.3)
5. Push the infant carrier module down into the base (Fig. 9), if the infant child restraint is secure, the infant child restraint indicator shows green. If the infant child restraint is not secure, the indicator shows red. (Fig. 10)
 - ! Pull up on the infant carrier module to be sure it is securely latched into the base.
 6. To release the infant carrier module, pull the infant carrier module up while squeezing the infant carrier module release button. (Fig. 11)

b. Installation with ISOFIX System

1. Unfold the load leg from storage compartment. (Fig. 5)
2. Fit the ISOFIX guides with the ISOFIX anchor points. (Fig. 12)
The ISOFIX guides can protect the surface of the vehicle seat from being torn. They can also guide the ISOFIX connectors.
3. Rotate the ISOFIX connectors 180 degrees until they are pointing in the direction of the ISOFIX guides. (Fig. 13)
4. Line up the ISOFIX connectors with the ISOFIX guides, and then click both ISOFIX connectors into the ISOFIX anchor points. (Fig. 14)

! Make sure that both ISOFIX connectors are securely attached to their ISOFIX anchor points. The colors of the indicators on the both ISOFIX connectors should be completely green. (Fig. 14.1)

! Check to make sure the base is securely installed by pulling on the both ISOFIX connectors.

5. Please refer to step 2 in section 'a. Installation with 3-point-belt' for adjustment of load leg.

The completely assembled base is shown as Fig. 15

! The ISOFIX connectors must be attached and locked onto the ISOFIX anchor points. (Fig. 15.1)

! The load leg must be installed correctly with green indicator. (Fig. 15.2)

6. Please refer to step 5, 6 in section 'a. Installation with 3-point-belt' to use the infant carrier module.
7. To remove the base, press the secondary lock button (Fig.16.1) first and then the button (Fig.16.2) on the ISOFIX connectors before removing the base from the vehicle seat. (Fig.16)
8. Press the ISOFIX releasing button to fold the ISOFIX. (Fig. 17)

Vehicle Fitting Information

The Joie infant carrier module with base are classified for “Semi-universal” use. They are suitable for fixing into the seat positions of the most cars. The figures on the diagram to the below correspond with the vehicle fitting positions listed in the following pages.

Seat positions in other cars may also be suitable to accept the child restraint. If in doubt, consult either the infant child restraint manufacturer or the retailer.

ALWAYS give priority to the rear seats of your vehicle.

DO NOT fit your infant child restraint onto a vehicle seat fitted with an airbag.

If your infant child restraint can be fitted, it is marked with ●.

If your infant child restraint cannot be fitted, it is marked with ○.

If your vehicle is not listed in this manual or it is not marked with either a ● or ○ then please refer to your vehicle's handbook or contact the manufacturer for further information.



ISOFIX and Load Leg_Belt Fit

① ② ③

Alfa Romeo

Guilietta (2010 >)	●	●	●
Mito (2009 >)	●	●	●

Audi

A1 (2011 >)	●	●	●
A1 Sportback (2012 >)	●	●	●
A3 Hatchback (2012 >)	●	●	●
A3 S3 (2012 >)	●	●	●
A3 Saloon (2014 >)	●	●	●
A4 Allroad (2009 >)	●	●	●
A4 Avant (2008 >)	●	●	●
A4 Saloon (2008 >)	●	●	●
A4 S4 (2009 >)	●	●	●
A4 S4 Avant (2009 >)	●	●	●
A5 (2007 >)	●	●	●
A5 Sportback (2009 >)	●	●	●
A5 S5 Sportback (2007 >)	●	●	●
A6 (2011 >)	●	●	●
A6 Allroad (2011 >)	●	●	●
A6 Avant (2011 >)	●	●	●
A6 S6 (2011 >)	●	●	●
A7 Sportback (2011 >)	●	●	●
A8 (2011 >)	●	●	●
A8 S8 (2011 >)	●	●	●
Q3 (2013 >)	●	●	●
Q5 (2009 >)	●	●	●
Q7 (2006 >)	●	●	●
TT Coupe (2006 >)	●	●	●

Bentley

	①	②	③
Continental GT (2003 - 2011)	○	●	●
Continental Flying Spur (2005 - 2012)	●	●	●
Continental GTC (2005 - 2012)	○	●	●
Mulsanne (2010 >)	●	●	●

BMW

1 Series Convertible (2008 >)	○	●	●
1 Series Coupe (2008 >)	○	●	●
1 Series F20 (2011 >)	●	●	●
3 Series Coupe (2007 >)	●	●	●
3 Series F30 (2012 >)	○	●	●
5 Series M5 (2005 - 2011)	●	●	●
5 Series Saloon (2003 - 2010)	●	●	●
5 Series Touring (2011 >)	●	●	●
5 Series Touring (2003 - 2010)	●	●	●
5 Series (2011 >)	●	●	●
6 Series Coupe (2011 >)	●	●	●
6 Series Convertible (2011 >)	●	●	●
6 Series Gran Coupe (2011 >)	●	●	●
7 Series (2010 >)	●	●	●
i3 (2014 >)	●	●	●
X1 (2010 >)	●	●	●
X3 F25 (2011 >)	●	●	●
X5 (2007 >)	●	●	●
X6 (2008 >)	●	●	●
X6 M (2008 >)	●	●	●
3-GT (2013 >)	●	●	●
5-GT (2010 >)	●	●	●

Cadillac

BLS Saloon (2006 - 2011)	●	●	●
--------------------------	---	---	---

	①	②	③
Chevrolet			
Aveo (2012 >)	●	●	●
Captiva (2007 >)	●	●	●
Cruze (2009 >)	●	●	●
Spark (2012 >)	●	●	●
Volt (2011 >)	●	●	●
Matiz (2005 - 2009)	●	●	●
Orlando (2011 >)	●	●	●
Traxx (2013 >)	●	●	●
Chrysler			
Grand Voyager (2008 >)	●	●	●
300 C (2012 >)	●	●	●
Delta (2011 >)	●	●	●
Ypsilon (2011 >)	●	●	●
Citroen			
Berlingo Multispace (2007 >)	●	○	○
C1 (2005 >)	●	●	●
C3 5 Door (2009 >)	●	●	●
C3 Picasso (2009 >)	●	●	●
C4 (2010 >)	●	●	●
C4 Picasso (2007 >)	●	○	○
C4 Picasso (2014 >)	●	●	●
C5 Saloon (2008 >)	●	●	●
C5 Tourer (2008 >)	●	●	●
DS3 (2010 >)	●	●	●
DS4 (2011 >)	●	●	●
DS5 (2013 >)	●	●	●

	①	②	③
Dacia			
Duster (2012 >)	●	●	●
Sandero (2013 >)	●	●	●
Fiat			
500 (2008 >)	●	●	●
500 C (2009 >)	●	●	●
Abarth 500 (2009 >)	●	●	●
Bravo (2007 >)	●	●	●
500L (2013 >)	●	●	●
Panda (2012 >)	●	●	●
Grande Punto (2006 >)	●	●	●
Abarth Grande Punto (2008 - 2011)	●	●	●
Ford			
B Max (2012 >)	●	●	●
C Max (2003 -2012)	●	●	●
Fiesta (2008 >)	●	●	●
Focus (2010 >)	●	●	●
Focus CMax (2003 - 2010)	●	○	○
Galaxy (2006 >)	●	○	○
KA (2009 >)	●	●	●
Kuga (2013 >)	●	●	●
Mondeo Estate (2007 >)	●	●	●
Mondeo Hatchback (2007 >)	●	●	●
Mondeo Saloon (2007 >)	●	●	●
S Max (2006 >)	●	○	○
CMax (2012 >)	●	●	●

Honda

	①	②	③
Accord Saloon (2008 >)	○	●	●
Accord Tourer (2008 >)	○	●	●
Civic (2012 >)	●	●	●
Civic (2006 - 2011)	●	●	●
Civic Hybrid Saloon (2006 - 2010)	●	●	●
Civic Type R (2007 - 2010)	●	●	●
CRV (2007 - 2013)	●	●	●
CRV (2012 >)	●	●	●
Elysion (2012 >)	●	●	●
FRV (2006 - 2011)	●	●	●
Insight (2009 >)	●	○	○
Jazz (2008 >)	●	●	●
Odyssey (2010 >)	●	●	●

Hyundai

i10 Hatchback (2008 >)	●	●	●
i20 Hatchback (2009 >)	●	●	●
i30 (2012 >)	●	●	●
i40 (2011 >)	●	●	●
iX20 (2010 >)	●	●	●
iX35 (2010 >)	●	●	●
SantaFe (2012 >)	●	●	●
Tucson (2010 >)	●	●	●
Veloster (2012 >)	●	●	●

Infiniti

EX (2009 >)	●	●	●
FX (2009 >)	●	●	●
G Coupe (2009 >)	●	●	●
G Saloon (2009 >)	●	●	●
M (2010 >)	●	●	●

Jaguar

	①	②	③
X-Type (2001 - 2010)	●	●	●
X-Type estate (2004 - 2010)	●	●	●
XF (2008 >)	●	●	●
XF R (2009 >)	●	●	●
XF Sportbrake (2013 >)	●	●	●
XJ (2010 >)	●	●	●
XK (2006 >)	●	●	●
XK Convertible (2006 >)	○	●	●
XK R (2006 >)	○	●	●

Jeep

Grand Cherokee (2011 >)	●	●	●
Compass (2011 >)	●	●	●

Kia

Carens (2013 >)	●	○	○
Ceed Hatchback (2012 >)	●	●	●
Optima (2012 >)	●	●	●
Picanto (2008 >)	●	●	●
Rio (2012 >)	●	●	●
Sorento (2012 >)	●	●	●
Soul (2009 >)	●	●	●
Sportage (2011 >)	●	●	●
Venga (2010 >)	●	●	●

Land Rover

Discovery 4 (2009 >)	●	●	●
Freelander 2 (2006 >)	●	●	●

	①	②	③
Range Rover (2013 >)	●	●	●
Range Rover (2002 - 2012)	●	●	●
Range Rover Sport (2005 - 2012)	●	●	●
Range Rover Sport (2013 >)	●	●	●
Range Rover Evoque (2011 >)	○	●	●

Lancia

Thema (2012 >)	●	●	●
Voyager(2010 >)	●	●	●
Ypsilon (2012 >)	●	●	●

Lexus

CT (2011 >)	●	●	●
GS (2013 >)	●	●	●
IS Saloon (2005 - 2012)	●	●	●
RX (2010 >)	●	●	●

Mazda

CX-5 (2011 >)	●	●	●
CX-7 (2007 - 2011)	●	●	●
2 (2007 >)	●	●	●
2 Saloon (2007 >)	●	●	●
3 Hatchback (2009 >)	●	●	●
3 Saloon (2009 >)	●	●	●
3 Hatchback (2014 >)	●	●	●
5 (2005 >)	●	●	●
6 Estate (2008 - 2012)	●	●	●
6 Hatchback (2007 - 2012)	●	●	●
6 Saloon (2007 - 2009)	●	●	●

Mercedes-Benz

	①	②	③
6 Saloon (2013 >)	●	●	●
6 Estate (2012 >)	●	●	●

A Class (2005 - 2012)	●	●	●
A Class (2013 >)	●	●	●
B Class (2012 >)	●	●	●
C Class (2008 >)	●	●	●
C Class Estate (2008 >)	○	●	●
C Class Coupe (2011 >)	○	●	●
CLA (2013 >)	●	●	●
CLS Shootingbrake (2012 >)	●	●	●
CLS Coupe (2011 >)	●	●	●
E Class (2009 - 2012)	●	●	●
E Class Coupe (2009 >)	●	●	●
E Class Estate (2009 >)	●	●	●
E-Class Saloon (2013 >)	●	●	●
GL Class (2006 - 2012)	●	●	●
M/ML Class (2005 - 2012)	●	●	●
R Class (2006 - 2012)	●	●	●
S Class (2006 - 2013)	●	●	●
SL Class (2012 >)	○	—	—
SLK (2011 >)	○	—	—

Mini

Mini Hatchback (2006 >)	●	●	●
Mini Hatchback (2014 >)	●	●	●
Mini Cooper S (2006 >)	●	●	●
Mini Coupe (2009 >)	●	—	—
Mini Countryman (2010 >)	●	●	●
Mini Paceman (2013 >)	●	●	●

① ② ③

Mitsubishi

ASX (2010 >)	●	●	●
Colt (2007 >)	●	●	●
Lancer (2008 - 2011)	●	●	●
Lancer Sportback (2008 - 2011)	●	●	●
Lancer Ralliart (2009 - 2011)	●	●	●
Outlander (2007 - 2013)	●	●	●
Outlander (2013 >)	●	●	●
Shogun (2007 >)	●	●	●

Nissan

Juke (2010 >)	●	●	●
Micra (2011 >)	●	●	●
Note (2006 >)	●	●	●
Note (2014 >)	●	●	●
Qashqai+2 (2008 >)	●	●	●
Qashqai (2014 >)	●	●	●
Quest MPV (2012 >)	●	●	●
X-Trail (2007 >)	●	●	●

Opel

Adam (2013 - >)	●	●	●
Agila (2008 >)	●	●	●
Ampera (2011 >)	●	●	●
Antara (2007 >)	●	●	●
Astra 5dr (2010 >)	○	●	●
Astra Estate (2010 >)	●	●	●
Astra GTC (2011 >)	●	●	●
Corsa D (2007 - 2012)	●	●	●
Corsa 3dr Hatchback (2006 >)	●	●	●
Corsa 5dr Hatchback (2006 >)	●	●	●

① ② ③

Corsa VXR (2007 >)	●	●	●
Insignia Hatchback (2009 >)	●	●	●
Insignia Saloon (2009 >)	●	●	●
Insignia Sports Tourer (2009 >)	●	●	●
Meriva (2010 >)	●	●	●
Mokka (2013 >)	●	●	●
Zafira (2005 >)	●	●	●
Zafira VXR (2005 >)	●	●	●

Peugeot

107 (2005 >)	●	●	●
207 3dr (2006 - 2012)	●	●	●
207 5dr (2006 - 2012)	●	●	●
207 SW (2007 - 2012)	●	●	●
2008 (2013 >)	●	●	●
208 3dr (2013 >)	●	●	●
208 5dr (2013 >)	●	●	●
307 (2001 - 2007)	●	●	●
307 Estate (2002 - 2007)	●	●	●
308 Hatchback (2008 >)	●	●	●
308 SW (2008 >)	●	●	●
308 (2014 >)	●	●	●
3008 (2009 >)	●	○	○
4008 (2011 >)	●	●	●
508 (2011 >)	●	●	●
508 SW (2011 >)	●	●	●
508 RXH (2013 >)	●	●	●
5008 (2010 >)	●	○	○
RCZ (2011 >)	●	○	○

Porsche

Cayenne (2011 >)	●	●	●
Panamera (2011 >)	○	●	●

Renault	①	②	③
Clio (2005 - 2012)	●	●	●
Clio Renault Sport (2006 - 2012)	●	●	●
Clio Sport Tourer (2007 - 2012)	●	●	●
Clio (2013 >)	●	●	●
Laguna (2008 - 2012)	●	●	●
Laguna Sport Tourer (2008 - 2012)	●	●	●
Megane Hatchback (2008 >)	●	●	●
Megane Sport Tourer (2009 >)	●	●	●
Modus (2004 - 2012)	●	●	●
Grand Modus (2008 - 2012)	●	●	●
Scenic (2009 >)	●	○	○
Twingo (2012 >)	●	●	●

Saab			
9-3 (2002 - 2012)	●	●	●
9-3 Sport Wagon (2005 - 2012)	●	●	●
9-3 X (2009 - 2012)	●	●	●
9-5 Estate (2005 - 2010)	●	●	●
9-5 (2011 - 2012)	●	●	●

Seat			
Alhambra (2010 >)	●	○	○
Altea (2004 - 2011)	●	●	●
Altea XL (2007 - 2011)	●	●	●
Altea Freetrack4 (2007 - 2009)	●	●	●
Exeo (2008 >)	●	●	●
Exeo ST Estate (2008 >)	●	●	●
Ibiza Cupra (2009 >)	●	●	●
Ibiza FR (2009 >)	●	●	●
Ibiza Hatchback (2008 >)	●	●	●
Leon Cupra (2007 - 2011)	●	●	●
Leon FR (2006 - 2012)	●	●	●

	①	②	③
Leon Hatchback (2005 - 2012)	●	●	●
Leon (2013 >)	●	●	●
Mii (2012 >)	●	●	●
Toledo (2013 >)	●	●	●

Skoda			
Citigo (2012 >)	●	●	●
Fabia Estate Combi (2008 >)	●	●	●
Fabia Hatchback (2007 >)	●	●	●
Octavia Estate Combi (2005 - 2013)	●	●	●
Octavia Hatchback (2004 - 2013)	●	●	●
Octavia Scout (2007 - 2013)	●	●	●
Octavia Hatchback (2013 >)	●	●	●
Rapid (2013 >)	●	●	●
Roomster (2006 >)	●	●	●
Superb Combi Estate (2008 >)	●	●	●
Superb (2008 >)	●	●	●
Yeti (2009 >)	●	●	●

Smart			
For Two Coupe (2007 >)	○	—	—

Ssangyong			
Kyron (2005 - 2011)	●	●	●

Suzuki			
Alto (2009 >)	●	●	●
Grand Vitara (2006 >)	●	●	●
Splash (2008 >)	●	●	●
Swift (2011 >)	●	●	●
SX-4 (2006 >)	●	●	●
SX-4 Saloon (2009 >)	●	●	●

	①	②	③
Subaru			
BRZ (2012 >)	○	●	●
Toyota			
Auris (2007 - 2012)	●	●	●
Avenis Hatchback (2009 >)	●	●	●
Auris (2013 >)	●	●	●
Avenis Tourer (2009 >)	●	●	●
Aygo (2005 >)	●	●	●
Aygo (2014 >)	●	●	●
EZ MPV (2013 >)	●	●	●
GT86 (2012 >)	○	●	●
Highlander (2013 >)	●	●	●
Land Cruiser (2003 - 2009)	●	●	●
Land Cruiser (2009 >)	●	●	●
Prius (2004 - 2009)	●	●	●
Prius (2009 >)	●	●	●
Prius Plus + (2012 >)	●	●	●
Rav 4 MK3 (2006 - 2011)	●	●	●
RAV4 (2013 >)	●	●	●
Verso (2009 - 2011)	●	○	○
Verso (2012 >)	●	○	○
Yaris Hatchback (2011 >)	●	●	●
Vauxhall			
Adam (2013 >)	●	●	●
Agila (2008 >)	●	●	●
Ampera (2011)	●	●	●
Antara (2007 >)	●	●	●
Astra 5dr (2010 >)	○	●	●
Astra Estate (2010 >)	●	●	●

	①	②	③
Astra GTC (2011 >)	●	●	●
Corsa D (2007 >)	●	●	●
Corsa 3dr Hatchback (2006 >)	●	●	●
Corsa 5dr Hatchback (2006 >)	●	●	●
Corsa VXR (2007 >)	●	●	●
Insignia Hatchback (2009 >)	●	●	●
Insignia Saloon (2009 >)	●	●	●
Insignia Sports Tourer (2009 >)	●	●	●
Meriva (2010 >)	●	●	●
Mokka (2013 >)	●	●	●
Zafira (2005 >)	●	●	●
Zafira VXR (2005 - 2010)	●	●	●
Volkswagen			
Beetle (2012 >)	●	●	●
Multivan Caravelle (2003 >)	●	●	●
Golf Cabriolet (2009 - 2012)	●	●	●
Golf Hatchback (2009 - 2012)	●	●	●
Golf Hatchback MK7 (2012 >)	●	●	●
Golf GTI (2009 - 2012)	●	●	●
Golf Plus (2009 - 2011)	●	●	●
Jetta (2011 >)	●	●	●
Passat (2010 >)	●	●	●
Passat (2005 - 2010)	●	●	●
Passat Alltrack (2012 >)	●	●	●
Passat CC (2008 >)	●	●	●
Passat Estate (2005 >)	●	●	●
Polo 3dr (2009 >)	●	●	●
Polo 5dr (2009 >)	●	●	●
Scirocco (2008 >)	●	●	●
Sharan (2010 >)	●	●	●
Tiguan (2008 >)	●	●	●
Touareg (2012 >)	●	●	●

① ② ③

Touran (2010 >) ● ○ ○
UP! (2012 >) ● ● ●

Volvo

C30 (2007 - 2012) ● ● ●
S60 (2010 >) ● ● ●
S80 (2007 >) ● ● ●
V40 (2012 >) ● ● ●
V40 Cross Country (2012 >) ● ● ●
V60 (2011 >) ● ● ●
V70 (2008 >) ● ● ●
XC60 (2008 >) ● ● ●
XC60 (2013 >) ● ● ●
XC70 (2008 >) ● ● ●
XC90 (2003 >) ● ● ●

ISOFIX and Load Leg_ISOFIX Fit

① ② ③

Alfa Romeo

Guilietta (2010 >) ○ ● ●
Mito (2009 >) ○ ● ●

Audi

A1 (2011 >) ○ ● ●
A1 Sportback (2012 >) ○ ● ●
A3 Hatchback (2012 >) ● ● ●
A3 S3 (2012 >) ● ● ●
A3 Saloon (2014 >) ○ ● ●
A4 Allroad (2009 >) ○ ● ●
A4 Av ant (2008 >) ● ● ●
A4 Saloon (2008 >) ○ ● ●
A4 S4 (2009 >) ○ ● ●
A4 S4 Avant (2009 >) ○ ● ●
A5 (2007 >) ○ ● ●
A5 Sportback (2009 >) ● ● ●
A5 S5 Sportback (2007 >) ○ ● ●
A6 (2011 >) ○ ● ●
A6 Allroad (2011 >) ● ● ●
A6 Avant (2011 >) ○ ● ●
A6 S6 (2011 >) ○ ● ●
A7 Sportback (2011 >) ● ● ●
A8 (2011 >) ○ ● ●
A8 S8 (2011 >) ○ ● ●
Q3 (2013 >) ● ● ●
Q5 (2009 >) ● ● ●
Q7 (2006 >) ● ● ●
TT Coupe (2006 >) ○ ○ ○

① ② ③

Bentley

Continental GT (2003 - 2011)	○	●	●
Continental Flying Spur (2005 - 2012)	○	●	●
Continental GTC (2005 - 2012)	○	●	●
Mulsanne (2010 >)	○	●	●

BMW

1 Series Convertible (2008 >)	●	●	●
1 Series Coupe (2008 >)	●	●	●
1 Series F20 (2011 >)	○	●	●
3 Series Coupe (2007 >)	●	●	●
3 Series F30 (2012 >)	○	●	●
5 Series M5 (2005 - 2011)	○	●	●
5 Series Saloon (2003 - 2010)	○	●	●
5 Series Touring (2011 >)	○	●	●
5 Series Touring (2003 - 2010)	○	●	●
5 Series (2011 >)	○	●	●
6 Series Coupe (2011 >)	○	●	●
6 Series Convertible (2011 >)	○	●	●
6 Series Gran Coupe (2011 >)	○	●	●
7 Series (2010 >)	○	●	●
i3 (2014 >)	○	●	●
X1 (2010 >)	○	●	●
X3 F25 (2011 >)	○	●	●
X5 (2007 >)	○	●	●
X6 (2008 >)	○	●	●
X6 M (2008 >)	○	●	●
3-GT (2013 >)	○	●	●
5-GT (2010 >)	○	●	●

Cadillac

BLS Saloon (2006 - 2011)	○	●	●
--------------------------	---	---	---

Chevrolet

Aveo (2012 >)	○	●	●
Captiva (2007 >)	○	●	●
Cruze (2009 >)	○	●	●
Spark (2012 >)	○	●	●
Volt (2011 >)	○	●	●
Matiz (2005 - 2009)	○	●	●
Orlando (2011 >)	○	●	●
Traxx (2013 >)	○	●	●

Chrysler

Grand Voyager (2008 >)	○	●	●
300 C (2012 >)	○	●	●
Delta (2011 >)	○	●	●
Ypsilon (2011 >)	○	●	●

Citroen

Berlingo Multispace (2007 >)	○	○	○
C1 (2005 >)	○	●	●
C3 5 Door (2009 >)	○	●	●
C3 Picasso (2009 >)	○	●	●
C4 (2010 >)	○	●	●
C4 Picasso (2007 >)	○	○	○
C4 Picasso (2014 >)	○	○	○
C5 Saloon (2008 >)	○	●	●
C5 Tourer (2008 >)	○	●	●
DS3 (2010 >)	○	●	●
DS4 (2011 >)	○	●	●
DS5 (2013 >)	○	●	●

Dacia

	①	②	③
Duster (2012 >)	○	●	●
Sandero (2013 >)	○	●	●

Fiat

500 (2008 >)	○	●	●
500 C (2009 >)	○	●	●
Abarth 500 (2009 >)	○	●	●
Bravo (2007 >)	○	●	●
500L (2013 >)	○	●	●
Panda (2012 >)	○	●	●
Grande Punto (2006 >)	○	●	●
Abarth Grande Punto (2008 - 2011)	○	●	●

Ford

B Max (2012 >)	○	●	●
C Max (2003 -2012)	○	○	○
Fiesta (2008 >)	○	●	●
Focus (2010 >)	○	●	●
Focus CMax (2003 - 2010)	○	○	○
Galaxy (2006 >)	○	○	○
KA (2009 >)	○	●	●
Kuga (2013 >)	○	●	●
Mondeo Estate (2007 >)	○	●	●
Mondeo Hatchback (2007 >)	○	●	●
Mondeo Saloon (2007 >)	○	●	●
S Max (2006 >)	○	○	○
CMax (2012 >)	○	●	●

Honda

Accord Saloon (2008 >)	○	●	●
------------------------	---	---	---

① ② ③

Accord Tourer (2008 >)	○	●	●
Civic (2012 >)	○	●	●
Civic (2006 - 2011)	○	●	●
Civic Hybrid Saloon (2006 - 2010)	○	●	●
Civic Type R (2007 - 2010)	○	●	●
CRV (2007 - 2013)	○	●	●
CRV (2012 >)	○	●	●
Elysion (2012 >)	○	●	●
FRV (2006 - 2011)	○	●	●
Insight (2009 >)	○	○	○
Jazz (2008 >)	○	●	●
Odyssey (2010 >)	○	○	○

Hyundai

i10 Hatchback (2008 >)	○	●	●
i20 Hatchback (2009 >)	○	●	●
i30 (2012 >)	○	●	●
i40 (2011 >)	○	●	●
iX20 (2010 >)	○	●	●
iX35 (2010 >)	○	●	●
SantaFe (2012 >)	○	●	●
Tucson (2010 >)	○	●	●
Veloster (2012 >)	○	●	●

Infiniti

EX (2009 >)	○	●	●
FX (2009 >)	○	●	●
G Coupe (2009 >)	○	●	●
G Saloon (2009 >)	○	●	●
M (2010 >)	○	●	●

① ② ③

Jaguar

X-Type (2001 - 2010)	○	○	○
X-Type estate (2004 - 2010)	○	●	●
XF (2008 >)	○	●	●
XF R (2009 >)	○	●	●
XF Sportbrake (2013 >)	○	●	●
XJ (2010 >)	○	●	●
XK (2006 >)	○	●	●
XK Convertible (2006 >)	○	●	●
XK R (2006 >)	○	●	●

Jeep

Grand Cherokee (2011 >)	○	○	○
Compass (2011 >)	○	○	○

Kia

Carens (2013 >)	○	○	○
Ceed Hatchback (2012 >)	○	●	●
Optima (2012 >)	○	●	●
Picanto (2008 >)	○	●	●
Rio (2012 >)	○	●	●
Sorento (2012 >)	○	●	●
Soul (2009 >)	○	●	●
Sportage (2011 >)	○	●	●
Venga (2010>)	○	●	●

Land Rover

Discovery 4 (2009 >)	○	●	●
Freelander 2 (2006 >)	○	●	●

① ② ③

Range Rover (2013 >)	○	●	●
Range Rover (2002 - 2012)	○	●	●
Range Rover Sport (2005 - 2012)	○	●	●
Range Rover Sport (2013 >)	○	●	●
Range Rover Evoque (2011 >)	○	●	●

Lancia

Thema (2012 >)	○	●	●
Voyager(2010 >)	○	●	●
Ypsilon (2012 >)	○	●	●

Lexus

CT (2011 >)	○	●	●
GS (2013 >)	○	●	●
IS Saloon (2005 - 2012)	○	●	●
RX (2010 >)	○	●	●

Mazda

CX-5 (2011 >)	○	●	●
CX-7 (2007 - 2011)	○	●	●
2 (2007 >)	○	●	●
2 Saloon (2007 >)	○	●	●
3 Hatchback (2009 >)	○	●	●
3 Saloon (2009 >)	○	●	●
3 Hatchback (2014 >)	○	●	●
5 (2005 >)	○	●	●
6 Estate (2008 - 2012)	○	●	●
6 Hatchback (2007 - 2012)	○	●	●
6 Saloon (2007 - 2009)	○	●	●
6 Saloon (2013 >)	○	●	●
6 Estate (2012 >)	○	●	●

	①	②	③
Mercedes-Benz			
A Class (2005 - 2012)	○	●	●
A Class (2013 >)	○	●	●
B Class (2012 >)	○	●	●
C Class (2008 >)	○	●	●
C Class Estate (2008 >)	○	●	●
C Class Coupe (2011 >)	○	●	●
CLA (2013 >)	○	●	●
CLS Shootingbrake (2012 >)	○	●	●
CLS Coupe (2011 >)	○	●	●
E Class (2009 - 2012)	○	●	●
E Class Coupe (2009 >)	○	●	●
E Class Estate (2009 >)	○	●	●
E-Class Saloon (2013 >)	○	●	●
GL Class (2006 - 2012)	○	●	●
M/ML Class (2005 - 2012)	○	●	●
R Class (2006 - 2012)	○	●	●
S Class (2006 - 2013)	○	●	●
SL Class (2012 >)	○	—	—
SLK (2011 >)	○	—	—

Mini

Mini Hatchback (2006 >)	○	●	●
Mini Hatchback (2014 >)	●	●	●
Mini Cooper S (2006 >)	○	●	●
Mini Coupe (2009 >)	○	—	—
Mini Countryman (2010 >)	○	●	●
Mini Paceman (2013 >)	○	●	●

Mitsubishi

ASX (2010 >)	○	●	●
Colt (2007 >)	○	●	●

	①	②	③
Lancer (2008 - 2011)	○	●	●
Lancer Sportback (2008 - 2011)	○	●	●
Lancer Ralliart (2009 - 2011)	○	●	●
Outlander (2007 - 2013)	○	●	●
Outlander (2013 >)	○	●	●
Shogun (2007 >)	○	●	●

Nissan

Juke (2010 >)	○	●	●
Micra (2011 >)	○	●	●
Note (2006 >)	○	●	●
Note (2014 >)	○	●	●
Qashqai+2 (2008 >)	○	●	●
Qashqai (2014 >)	○	●	●
Quest MPV (2012 >)	○	●	●
X-Trail (2007 >)	○	●	●

Opel

Adam (2013 - >)	○	●	●
Agila (2008 >)	○	●	●
Ampera (2011 >)	○	●	●
Antara (2007 >)	○	●	●
Astra 5dr (2010 >)	○	●	●
Astra Estate (2010 >)	○	●	●
Astra GTC (2011 >)	○	●	●
Corsa D (2007 - 2012)	○	●	●
Corsa 3dr Hatchback (2006 >)	○	●	●
Corsa 5dr Hatchback (2006 >)	○	●	●
Corsa VXR (2007 >)	○	●	●
Insignia Hatchback (2009 >)	○	●	●
Insignia Saloon (2009 >)	○	●	●
Insignia Sports Tourer (2009 >)	○	●	●

① ② ③

Meriva (2010 >) ○ ● ●
 Mokka (2013 >) ○ ● ●
 Zafira (2005 >) ○ ● ●
 Zafira VXR (2005 >) ○ ● ●

Peugeot

107 (2005 >) ○ ● ●
 207 3dr (2006 - 2012) ○ ● ●
 207 5dr (2006 - 2012) ○ ● ●
 207 SW (2007 - 2012) ○ ● ●
 2008 (2013 >) ○ ● ●
 208 3dr (2013 >) ○ ● ●
 208 5dr (2013 >) ○ ● ●
 307 (2001 - 2007) ○ ● ●
 307 Estate (2002 - 2007) ○ ● ●
 308 Hatchback (2008 >) ○ ● ●
 308 SW (2008 >) ○ ● ●
 308 (2014 >) ○ ● ●
 3008 (2009 >) ○ ○ ○
 4008 (2011 >) ○ ● ●
 508 (2011 >) ○ ● ●
 508 SW (2011 >) ○ ● ●
 508 RXH (2013 >) ○ ● ●
 5008 (2010 >) ○ ○ ○
 RCZ (2011 >) ○ ○ ○

Porsche

Cayenne (2011 >) ○ ● ●
 Panamera (2011 >) ○ ● ●

Renault

Clio (2005 - 2012) ○ ● ●
 Clio Renault Sport (2006 - 2012) ○ ● ●
 Clio Sport Tourer (2007 - 2012) ○ ● ●
 Clio (2013 >) ● ● ●
 Laguna (2008 - 2012) ○ ● ●
 Laguna Sport Tourer (2008 - 2012) ○ ● ●
 Megane Hatchback (2008 >) ○ ● ●
 Megane Sport Tourer (2009 >) ○ ● ●
 Modus (2004 - 2012) ○ ● ●
 Grand Modus (2008 - 2012) ○ ● ●
 Scenic (2009 >) ○ ○ ○
 Twingo (2012 >) ○ ● ●

Saab

9-3 (2002 - 2012) ○ ● ●
 9-3 Sport Wagon (2005 - 2012) ○ ● ●
 9-3 X (2009 - 2012) ○ ● ●
 9-5 Estate (2005 - 2010) ○ ● ●
 9-5 (2011 - 2012) ○ ● ●

Seat

Alhambra (2010 >) ○ ○ ○
 Altea (2004 - 2011) ○ ● ●
 Altea XL (2007 - 2011) ○ ● ●
 Altea Freetrack4 (2007 - 2009) ○ ● ●
 Exeo (2008 >) ○ ● ●
 Exeo ST Estate (2008 >) ○ ● ●
 Ibiza Cupra (2009 >) ○ ● ●
 Ibiza FR (2009 >) ○ ● ●
 Ibiza Hatchback (2008 >) ○ ● ●

① ② ③

① ② ③

Leon Cupra (2007 - 2011)	○	●	●
Leon FR (2006 - 2012)	○	●	●
Leon Hatchback (2005 - 2012)	○	●	●
Leon (2013 >)	○	●	●
Mii (2012 >)	○	●	●
Toledo (2013 >)	○	●	●

Skoda

Citigo (2012 >)	○	●	●
Fabia Estate Combi (2008 >)	○	●	●
Fabia Hatchback (2007 >)	○	●	●
Octavia Estate Combi (2005 - 2013)	○	●	●
Octavia Hatchback (2004 - 2013)	○	●	●
Octavia Scout (2007 - 2013)	○	●	●
Octavia Hatchback (2013 >)	○	●	●
Rapid (2013>)	○	●	●
Roomster (2006 >)	○	●	●
Superb Combi Estate (2008 >)	○	●	●
Superb (2008 >)	○	●	●
Yeti (2009 >)	○	●	●

Smart

For Two Coupe (2007 >)	○	—	—
------------------------	---	---	---

Ssangyong

Kyron (2005 - 2011)	○	●	●
---------------------	---	---	---

Suzuki

Alto (2009 >)	○	●	●
Grand Vitara (2006 >)	○	●	●
Splash (2008 >)	○	●	●

① ② ③

Swift (2011 >)	○	●	●
SX-4 (2006 >)	○	●	●
SX-4 Saloon (2009 >)	○	●	●

Subaru

BRZ (2012 >)	○	●	●
--------------	---	---	---

Toyota

Auris (2007 - 2012)	○	●	●
Avensis Hatchback (2009 >)	○	●	●
Auris (2013 >)	○	●	●
Avensis Tourer (2009 >)	○	●	●
Aygo (2005 >)	○	●	●
Aygo (2014 >)	○	●	●
EZ MPV (2013 >)	○	●	●
GT86 (2012 >)	○	●	●
Highlander (2013 >)	○	●	●
Land Cruiser (2003 - 2009)	○	●	●
Land Cruiser (2009 >)	○	●	●
Prius (2004 - 2009)	○	●	●
Prius (2009 >)	○	●	●
Prius Plus + (2012 >)	○	●	●
Rav 4 MK3 (2006 - 2011)	○	●	●
RAV4 (2013 >)	○	●	●
Verso (2009 - 2011)	○	○	○
Verso (2012 >)	○	○	○
Yaris Hatchback (2011 >)	○	●	●

Vauxhall

Adam (2013 >)	○	●	●
Agila (2008 >)	○	●	●
Ampera (2011)	○	●	●

	①	②	③
Antara (2007 >)	○	●	●
Astra 5dr (2010 >)	○	●	●
Astra Estate (2010 >)	○	●	●
Astra GTC (2011 >)	○	●	●
Corsa D (2007 >)	○	●	●
Corsa 3dr Hatchback (2006 >)	○	●	●
Corsa 5dr Hatchback (2006 >)	○	●	●
Corsa VXR (2007 >)	○	●	●
Insignia Hatchback (2009 >)	○	●	●
Insignia Saloon (2009 >)	○	●	●
Insignia Sports Tourer (2009 >)	○	●	●
Meriva (2010 >)	○	●	●
Mokka (2013 >)	○	●	●
Zafira (2005 >)	○	●	●
Zafira VXR (2005 - 2010)	○	●	●

Volkswagen

Beetle (2012 >)	○	●	●
Multivan Caravelle (2003 >)	○	●	●
Golf Cabriolet (2009 - 2012)	○	●	●
Golf Hatchback (2009 - 2012)	○	●	●
Golf Hatchback MK7 (2012 >)	○	●	●
Golf GTI (2009 - 2012)	○	●	●
Golf Plus (2009 - 2011)	○	●	●
Jetta (2011 >)	○	●	●
Passat (2010 >)	○	●	●
Passat (2005 - 2010)	○	●	●
Passat Alltrack (2012 >)	○	●	●
Passat CC (2008 >)	○	●	●
Passat Estate (2005 >)	○	●	●
Polo 3dr (2009 >)	○	●	●
Polo 5dr (2009 >)	○	●	●

	①	②	③
Scirocco (2008 >)	○	●	●
Sharan (2010 >)	○	●	●
Tiguan (2008 >)	○	●	●
Touareg (2012 >)	○	●	●
Touran (2010 >)	○	○	○
UP! (2012 >)	○	●	●

Volvo

C30 (2007 - 2012)	○	●	●
S60 (2010 >)	○	●	●
S80 (2007 >)	○	●	●
V40 (2012 >)	○	●	●
V40 Cross Country (2012 >)	○	●	●
V60 (2011 >)	○	●	●
V70 (2008 >)	○	●	●
XC60 (2008 >)	○	●	●
XC60 (2013 >)	○	●	●
XC70 (2008 >)	○	●	●
XC90 (2003 >)	○	●	●



Joie Children's Products (UK) Limited
Venture Point, Towers Business Park,
Rugeley, Staffordshire, WS15 1UZ, UK

bring the kids™

Share the joy at joiebaby.com

P-IM0150D